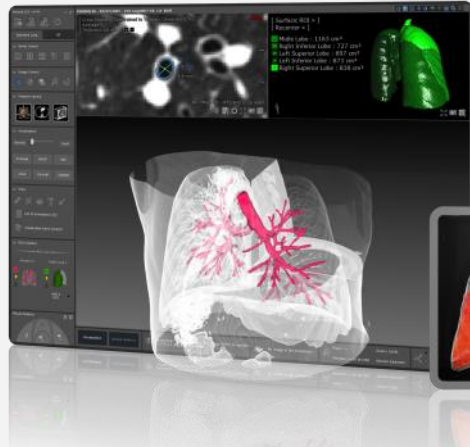
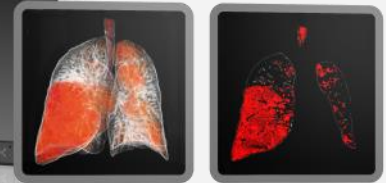




Myrian®
XP-Lung



intrasense®



Surgery planning tools

- ◆ 3D visualization of interactions between a lesion and the surrounding vascular system and airways
- ◆ Display in a single image structures enhancing both at arterial and venous phase



Sharp visualization tools

- ◆ Customizable protocols, optimized to visualize pulmonary series
- ◆ Virtual bronchoscopy, multiple windowing, MIP, easy comparison
- ◆ Easy onsite configuration to match acquisition protocol and expected workflow



3D low attenuation

- ◆ Separation of left and right lung as well as the airways
- ◆ Segmentation and quantification of low attenuation tissues
- ◆ Automatic lung tissue segmentation with threshold adjustment



**New capabilities
for lung surgeons
and physicians**

intrasense.fr



Fully customizable interface, dedicated tools

Cross-section dedicated viewport, virtual bronchoscopy

Density characterization, disease quantification

Optimized hanging protocols

Characterization and quantification of tissues

Advanced 3D visualization of tissues

Automatic segmentation tools



Airways stent planning

- ◆ Airways segmentation and centerline computation
- ◆ 3D visualization obtained segmentation
- ◆ CPR visualization of the airways
- ◆ Straightened airways viewport
- ◆ Automatic cross section navigation viewport and possibility to manually edit the cross section contour
- ◆ Stenosis quantification and stent planning layouts